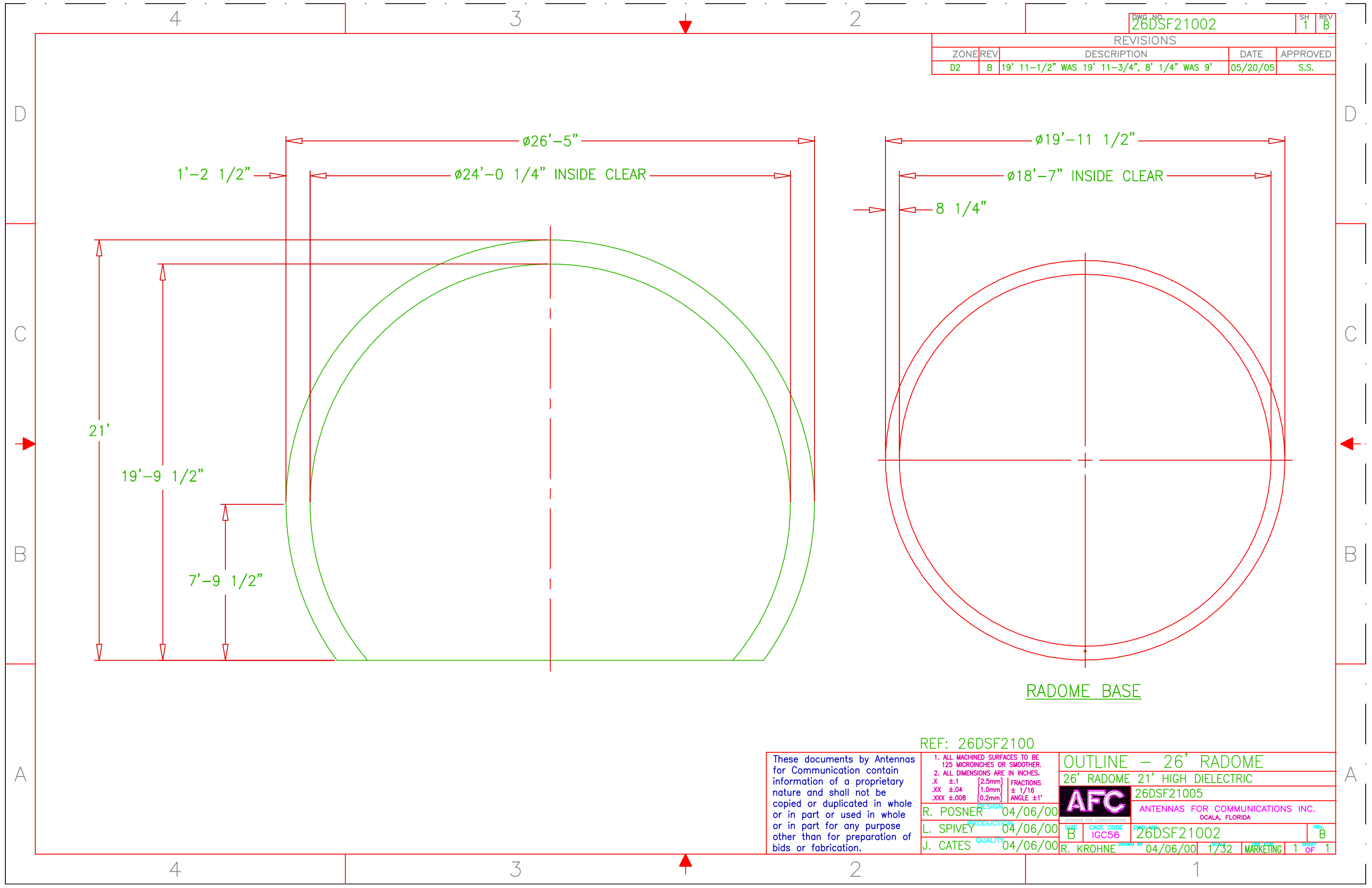


DWG NO. 26DSF21002

SH 1 REV B

REVISIONS				
ZONE	REV	DESCRIPTION	DATE	APPROVED
D2	B	19' 11-1/2" WAS 19' 11-3/4", 8' 1/4" WAS 9'	05/20/05	S.S.



RADOME BASE

REF: 26DSF2100

These documents by Antennas for Communication contain information of a proprietary nature and shall not be copied or duplicated in whole or in part or used in whole or in part for any purpose other than for preparation of bids or fabrication.

1. ALL MACHINED SURFACES TO BE 125 MICROINCHES OR SMOOTHER.
2. ALL DIMENSIONS ARE IN INCHES.
.X ±.1 [2.5mm]
.XX ±.04 [1.0mm] ± 1/16
.XXX ±.008 [0.2mm] ANGLE ±1°
R. POSNER DESIGN 04/06/00
L. SPIVEY PRODUCTION 04/06/00
J. CATES QUALITY 04/06/00

OUTLINE - 26' RADOME			
26' RADOME 21' HIGH DIELECTRIC			
AFC		26DSF21005	
ANTENNAS FOR COMMUNICATIONS INC. OCALA, FLORIDA			
SIZE	CAGE CODE	DWG NO.	REV.
B	IGC56	26DSF21002	B
DATE	BY	DATE	BY
04/06/00	R. KROHNE	04/06/00	1/32
MARKETING		1 OF 1	