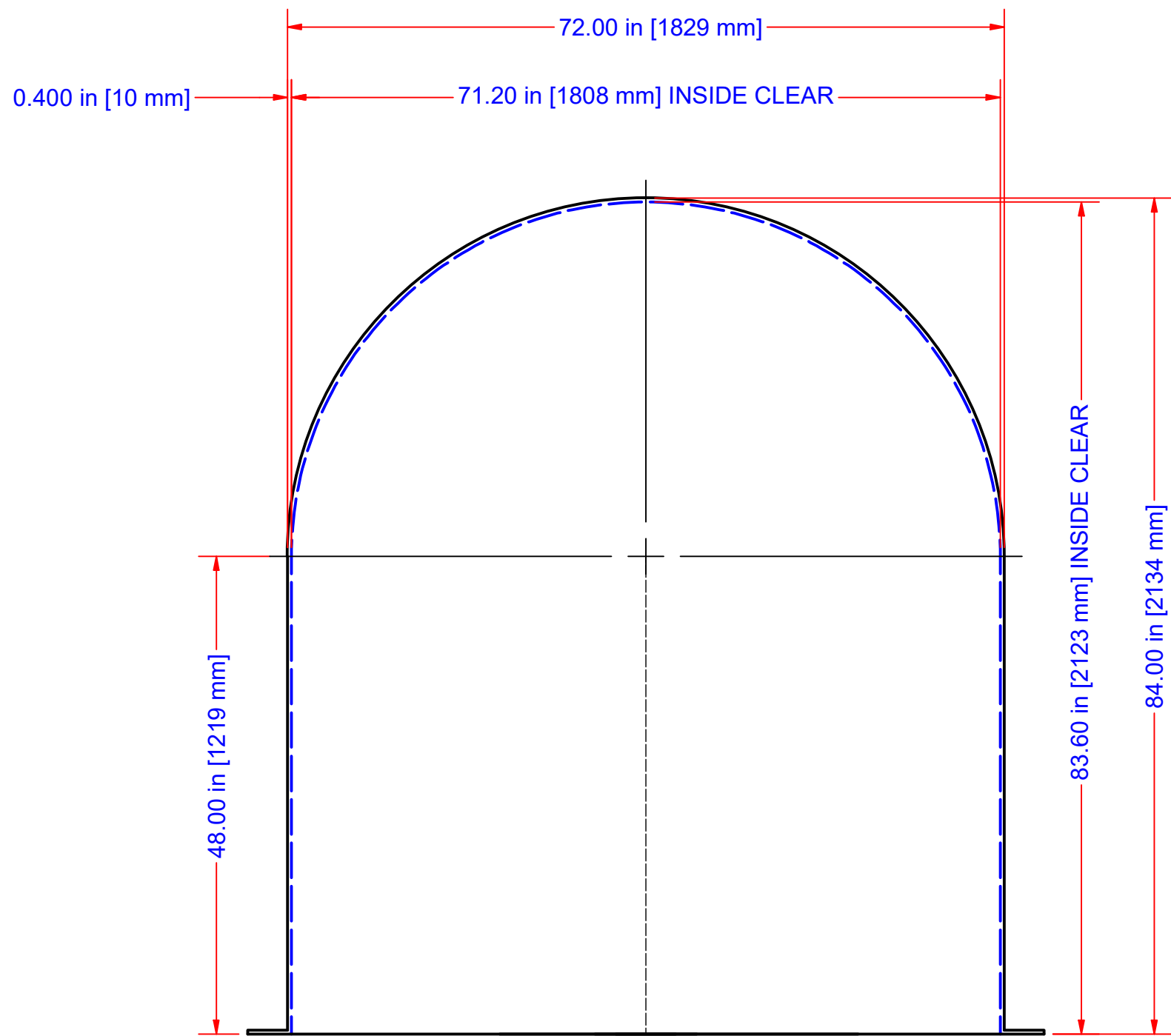
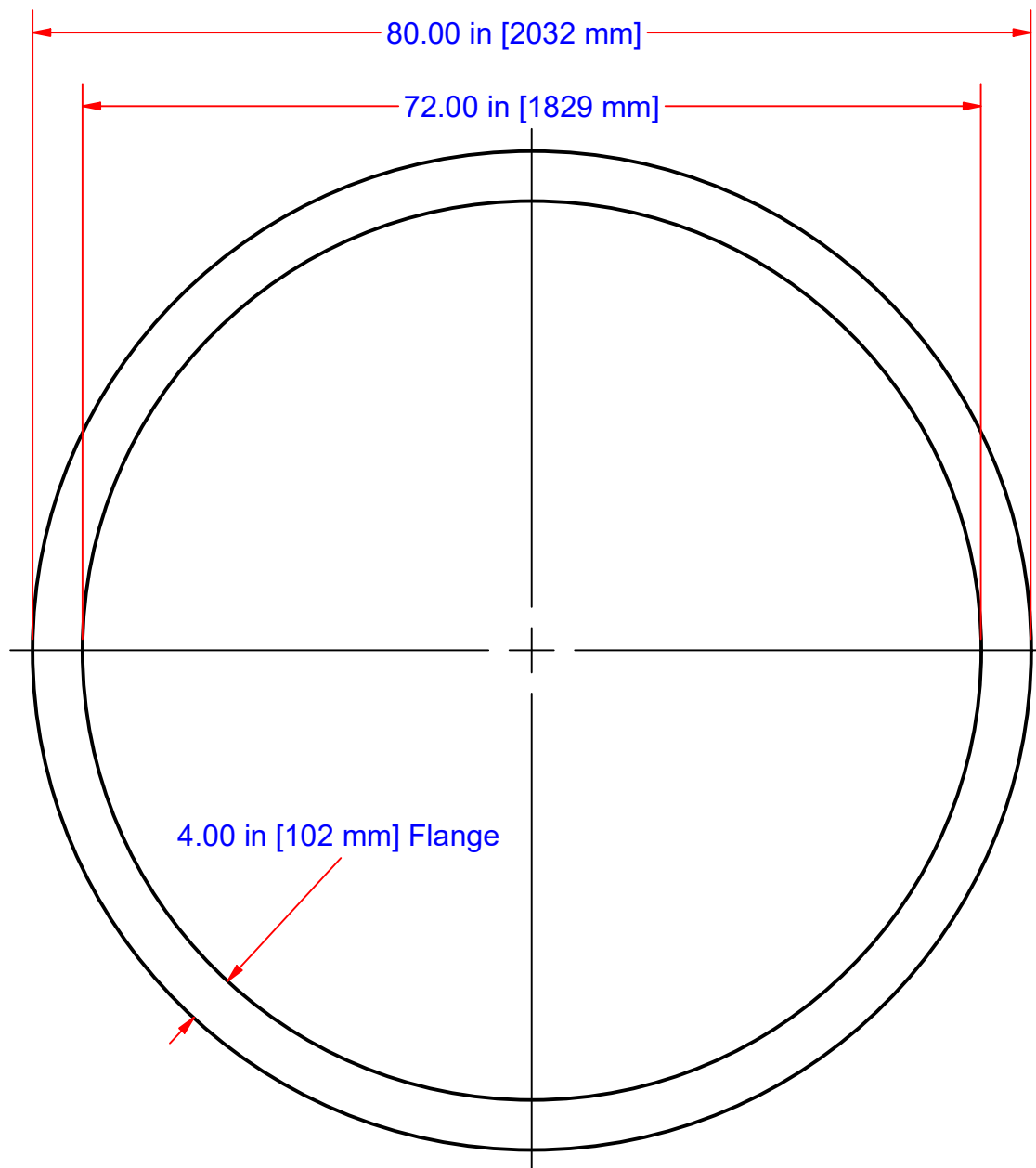


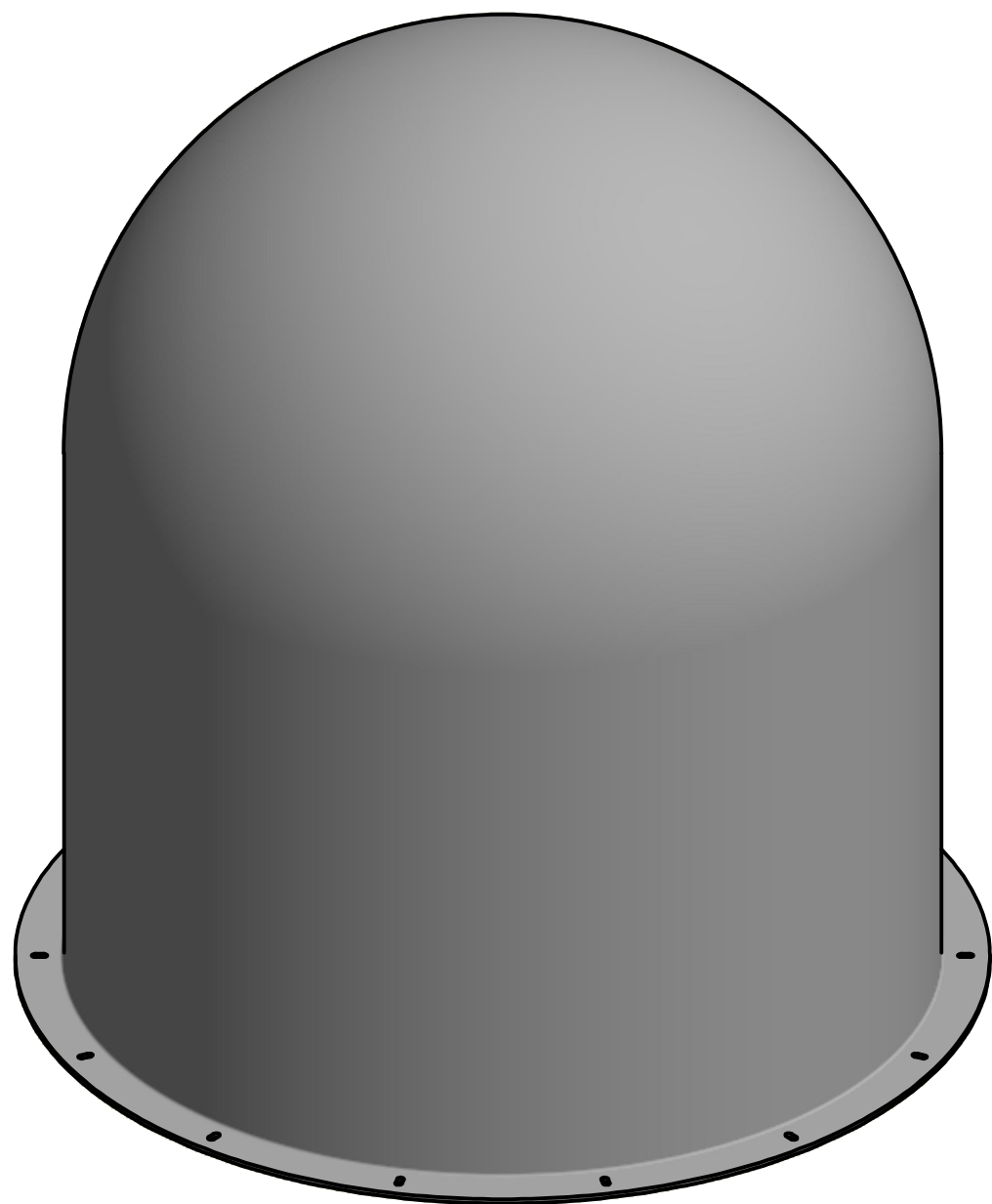
REVISION HISTORY				
ZONE	REV	DESCRIPTION	DATE	APPROVED
All	0	Initial Release	02/26/2021	J. Lee



ELEVATION



BASE



RADOME 3-D View

**PRELIMINARY**

These documents by Antennas for Communications contain information of a proprietary nature and shall not be copied or duplicated in whole or in part or used in whole or in part for any purpose other than for preparation of bids or fabrication.

- 1. ALL MACHINED SURFACES TO BE 125 MICROINCHES OR SMOOTHER.
- 2. ALL DIMENSIONS ARE IN INCHES.
- .X ± .1 [2.5mm] | FRACTIONS
- .XX ± .04 [1.0mm] | ± 1/16
- .XXX ± .008 [0.2mm] | ANGLE ± 1°

6DPT7 Radome			
6' * 7' DIELECTRIC RADOME			
<b>AFC</b>		6DPT7	
		ANTENNAS FOR COMMUNICATIONS INC. OCALA, FLORIDA	
SIZE B	CAGE CODE	DWG NO 6DPT7_Radome	
DRAWING BY J. LEE	DATE 02/26/2021	SCALE 3/4 = 1"	USE FOR MARKETING
			SHEET 1/1